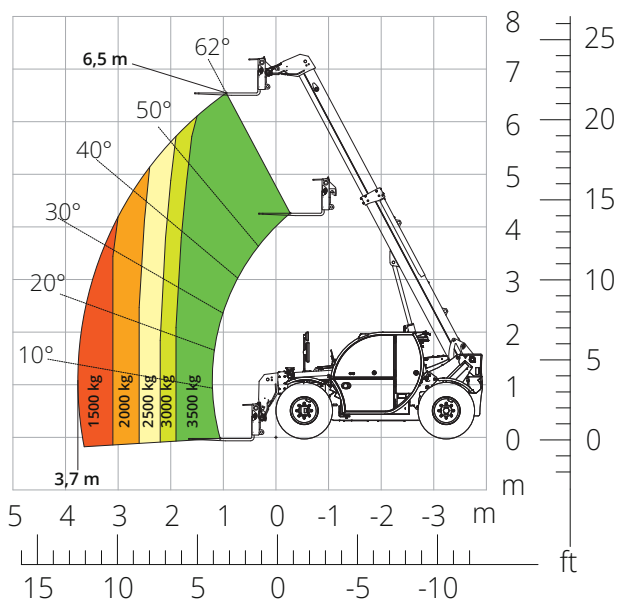


TH

3,5.7

PRELIMINARY



Load chart on tyres



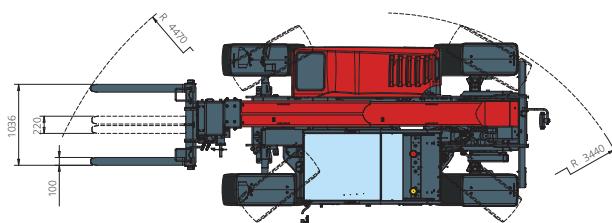
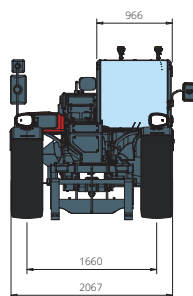
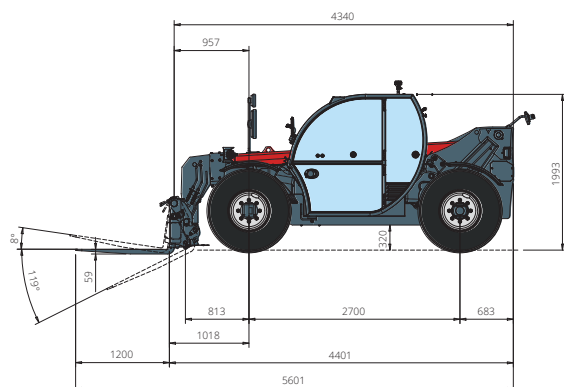
CONSTRUCTION



LOGISTICS



EVENTS
AND FILM



Machine model	Telescopic handler	TH 3,5.7	
	Maximum lifting capacity	3,500 kg	
	Maximum lifting height	6.80 m	
	Maximum reach	3.90 m	
Stabilisers	Type	-	
Engine	Model	Deutz TD 2,9 L4 EDG Stage IIIA	Deutz TD 2,9 L4 Stage V
	Rated power	55.4 kW (75.3 hp) at 2,600 rpm	
	Maximum torque	260 Nm at 1,600 rpm	
	Displacement	2.9 l	
	Cylinders	4 in line	
	Engine configuration	Turbocharged direct injection diesel	
	Cooling system	Water	
Transmission	Type	Hydrostatic	
	Maximum pressure	500 bar	
	Gear box	Dropbox, 2 speeds	
Axles and brakes	Type	Axles with planetary gearboxes	
	Front axle	Steering	
	Rear axle	Free oscillation	
	No. of driving/steering wheels	4WD - 4WS	
	Steering mode	Frontal/Concentric/Crab	
	Service brake	Wet multi-disk on front and rear axle	
	Parking brake	Hydraulic with negative action on front axle	
	Tyres dimensions	380/75 R20	
Performance	Max. travel speed	32 km/h	
	Gradeability	89%	
	Turning radius (end of forks)	4,470 mm	
Weights	Total unladen*	-	
	Front axle unladen (boom retracted and lowered)*	-	
	Rear axle unladen (boom retracted and lowered)*	-	
Tank and system capacities	Fuel tank	75 l	
	AdBlue	-	
	Hydraulic oil tank	95 l	
	Engine oil tank	9 l	
	Cooling liquid	15 l	
Hydraulic circuit for movements	Circuit type	Load sensing	
	Service pump	Variable displacement	
	Max. hydraulic flow rate	90 l/min	
	Max. boom head flow rate	75 l/min	
	Max. operating system pressure	315 bar	
	Controls for boom movements	Compensated electro-proportional valve	
	Movements control	1 joystick with integrated manoeuvre enable	
Standard met	2006/42/EC: EU Machinery Directive 2016/1628: EU Regulation on the emissions of stage V engines EN 1459-X: Relating to standards on the safety requirements for variable reach machines EN 280-1: standards relating to mobile elevating work platforms (if available) ROPS/FOPS level 2: relating to the standards for protective structures		

The data given in this brochure are provided for information purposes and are subject to change without prior notice.

All images are purely guideline and might not give an exact representation of the product.

*the stated weight refers to the vehicle unladen with standard equipment and may vary depending on the chosen configuration.